

## PRX1 Wireless Proximity Sensor

The PRX1 is a battery-operated wireless accessory to a Pelican TS200, TS200H, TS250, and TS250H. The PRX1 provides one of two functions: 1) Detecting if a door or window has opened or closed; or 2) As an input for an external dry-contact occupancy sensor. The PRX1 is powered by (2) AA batteries; the charge will last for at least twelve months. The Pelican Web App will notify via email and text message when batteries have less than 20% capacity. Pelican displays PRX1 usage information on easy-to-read historical graphics viewable on any Internet connected device.

### + WIRELESS COMMUNICATION

The PRX1 communicates to a master Pelican thermostat through Pelican's advanced wireless mesh network. The PRX1 is assigned to its master thermostat through the Pelican Web App. Up to eight PRX1s can be connected to a single Pelican thermostat.

### + DOOR/WINDOW SENSOR

After pairing the PRX1 to a Pelican thermostat, it can be set to turn "OFF" a thermostat when a door or window is left open. The thermostat will go back to its last setting when the door or window is closed. The PRX1 has an internal magnetic reed switch used to detect if a magnet, installed on a door or window, moves.

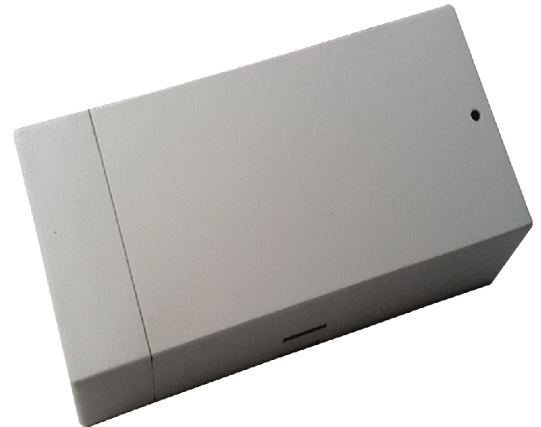
### + OCCUPANCY SENSOR INPUT

The PRX1 has a two wire input that can be used for interfacing with a dry-contact occupancy sensor. The PRX1 can be enabled to automatically setback a thermostat's temperature setpoint during unoccupied periods, and will then set the thermostat to a scheduled temperature when the space becomes occupied.

### + EXTERNAL REED SWITCH

Provided with the PRX1 is a two wire external door/window reed switch for installations where the PRX1 cannot easily be installed on a door or window frame.

**Designed and assembled in the USA**  
**5-Year Limited Warranty**



### Specifications

#### POWER

(2) AA Batteries  
Easy access for replacing batteries

#### COMPATIBILITY

2.4 GHz IEEE std. 802.15.4  
Complies with Class B Part 15 of the FCC rules

#### MAGNETIC REED SWITCH

Internal Magnetic Reed Switch (Included)  
Small Door/Window Magnet (Included)  
Two Wire Input for External  
Magnetic Reed Switch

#### DRY CONTACT INPUT

Occupancy Sensor: N/O = Unoccupied  
N/C = Occupied

#### SIZE

Inch H 1.5 x W 3.25 x D 1.0  
mm H 38 x W 82.5 x D 25  
Horizontal Mounting

Pelican Wireless Systems | 2655 Collier Canyon Road, Livermore CA 94551  
(888) 512-0490 | sales@pelicanwireless.com